

**Electro-Hydraulic Deck Hatch
with raised coaming and HPU**

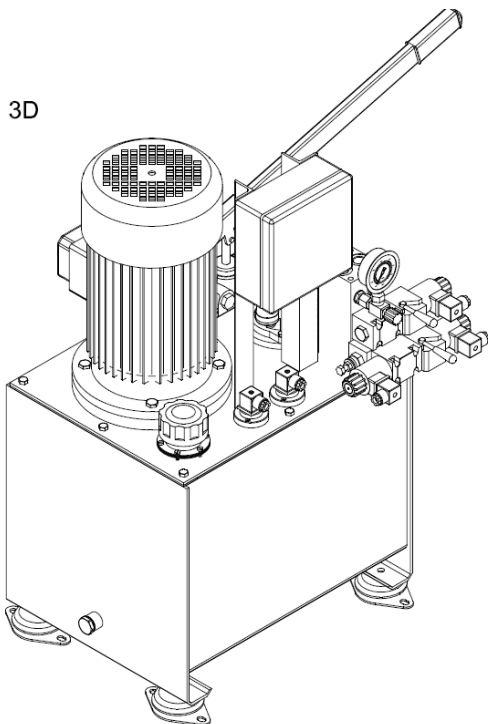
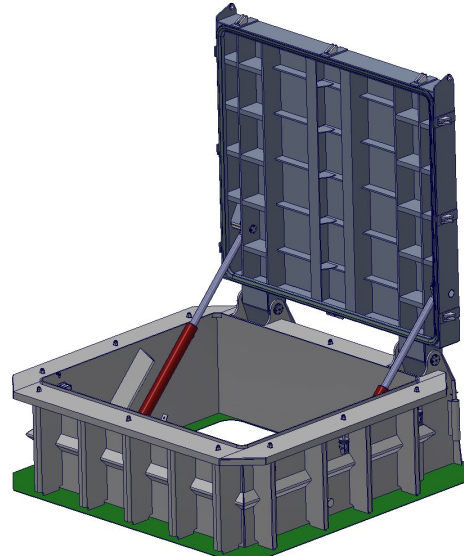
General

The electro-hydraulic operated hatches are compact watertight/weathertight hatches. It is supplied as a completely finished and tested unit, ready for welding on deck. It combines the well-known proven mechanical design of the hatch with a standardized hydraulic HPU and electrical system. Available in a range of sizes and options.

The design and manufacture of is in compliance with the IMO/SOLAS safety regulations for to fulfil the watertight or wethertight integrity of the vessel

Description/ operation & control

The hatch is supplied with an individual compact HPU which means that the power pack, valve block, hand pump and control box are pre-mounted on a skid frame. The HPU has an independent electric-hydraulic system with one power source consisting of a motor and pump capable of closing or opening the hatch between 60-120 seconds.



Normal local operation

Local power operation by push buttons for closing and opening. "hatch open" as well as "hatch close" is active operated which means that the operation of the hatch will stop after the release of push buttons. The motor is only running while push button is operated.



Emergency local operation

Emergency operation by a hand pump operable on the HPU, to allow closing and opening.

Alarm/indication signals

Locally there are two audible alarm (sounder) combined with a visual alarm (flash light). At the HPU a visual indication (red/green lights) are present. Potential free contact are available on the HPU for wheelhouse panel indication for open/close indication and alarm signalling to SMS (general alarm / open/close indication).

**Electro-Hydraulic Deck Hatch
with raised coaming and HPU**

/// Specifications

Sizes:

Height: max. 1000mm. Width: max. 4000mm; coaming height 1100 mm

Material

Coaming and cover: Steel Grade A
All Axles and bushes: Stainless steel 316

Water pressure

Weathertight

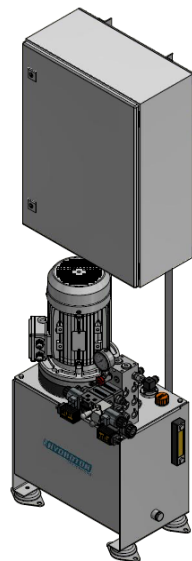
Cylinders

Two steel (2) cylinders for open/close operation of the hatch including brake valve.



Hydraulic system

75L tank combined with 4 kW e-motor with gear pump. Local hand pump. Valve block with integrated control lever operable.



**Electro-Hydraulic Deck Hatch
with raised coaming and HPU****Electrical system**

RAL 7032 e-box with local control and indication system. IP 68 position indicators open/closed.
IP 66 sounder/flash light. Power supply: 400 VAC, 3ph, 50Hz or 440 VAC, 3ph, 60Hz for pump motor: 24 VDC for control and indication system.

Alarm indication

Alarm indication by 2 sounders/flashlights locally. Alarm contacts (pot free) at HPU for interface to ships monitoring system. Interlocking/bridge release contact.

Surface treatment

See paint specification.

Installation, operation and maintenance manual

Two (2) hard copy in English language.
One (1) CD-Rom in English language.

General arrangement drawings

See GA drawings.

clamping device



hatch; mechanical lock in open position and inspection hatch

