



Installation procedure
Tank Vent Check Valves
CM Type

WINE L B.V.
P.O. Box 70, 9400 AB Assen,
Dr AF Philipsweg 55, 9403 AD Assen,
The Netherlands
Tel. 31 (0)592 366060, Fax 31 (0)592 340833
E-mail: info@winel.nl
<http://www.winel.nl>

Installation Procedure TVCV CM TYPE

Rev: A	Written: RK	Installation procedure
Date: 2016-03-29	Page: 1 / 7	Approved by: RK



Installation procedure
Tank Vent Check Valves
CM Type

WINE L B.V.
P.O. Box 70, 9400 AB Assen,
Dr AF Philipsweg 55, 9403 AD Assen,
The Netherlands
Tel. 31 (0)592 366060, Fax 31 (0)592 340833
E-mail: info@winel.nl
<http://www.winel.nl>

General information

manufactured by:

Winel B.V.
PO Box 70
9400 AB ASSEN
The Netherlands

Head office
Visiting address:
Dr. AF Philipsweg 55
9403 AD ASSEN
The Netherlands

Tel: +31 (0)592 366 060
Fax: +31 (0)592 340 833
e-mail: info@winel.nl
web: www.winel.nl

For the world wide network of agents, dealers and service support centres
please visit our web-site for more information.

Rev: A	Written: RK	Installation procedure
Date: 2016-03-29	Page: 2 / 7	Approved by: RK



Installation procedure
Tank Vent Check Valves
CM Type

WINEB B.V.
P.O. Box 70, 9400 AB Assen,
Dr AF Philipsweg 55, 9403 AD Assen,
The Netherlands
Tel. 31 (0)592 366060, Fax 31 (0)592 340833
E-mail: info@wineb.nl
<http://www.wineb.nl>





WINEB B.V. Tank Vent Check valves should **NEVER** be used for any other purpose than indicated in these instructions. In case of doubt, you are advised to consult Wineb B.V. and/or the surveyor responsible.

i *WINEB B.V. Tank Vent Check valves are not designed for overflow purposes of fluids. While filling a.o. the ballast tanks, the responsible officer on the vessel should prevent an overflow situation. In case of frequent or continuous overflows with fluids the seats and the floating balls may become damaged*

Rev: A	Written: RK	Installation procedure
Date: 2016-03-29	Page: 3 / 7	Approved by: RK

Safety and Warranty

Abbreviations and symbols.

	This symbol denotes safety precautions, the non-observance of which can endanger persons and the environment.
	This symbol denotes safety precautions, the non-observance of which can endanger persons by electrical voltage.
	This symbol marks an important note for the proper use of the system. The non-observance of these notes can lead to damage or failures.
	User tips and particularly useful information follow this symbol.



General safety instructions.

- Always READ INSTRUCTIONS BEFORE OPERATING any WINEB B.V. product.
Note: NOT following the instructions can endanger persons and the environment.
- Be aware that screens installed in the valves might freeze in winter conditions. Always check the free airflow of the valves, *especially* before filling or emptying any tanks.
- *Be aware that dust etc might pollute screens installed in the valves. Always check the free airflow of the valves, especially before filling or emptying any tanks.*

WINEB B.V. will only accept warranty claims if the maintenance instructions are *carefully followed and original Wineb B.V. parts have been used. In case of neglected maintenance procedures and mounting non-Wineb B.V. parts, WINEB B.V. will not accept any responsibility. Please note that a proper execution of these maintenance instructions is the interest of the ship's – and its crew's safety and reliability.*

Rev: A	Written: RK	Installation procedure
Date: 2016-03-29	Page: 4/ 7	Approved by: RK

Installation instruction

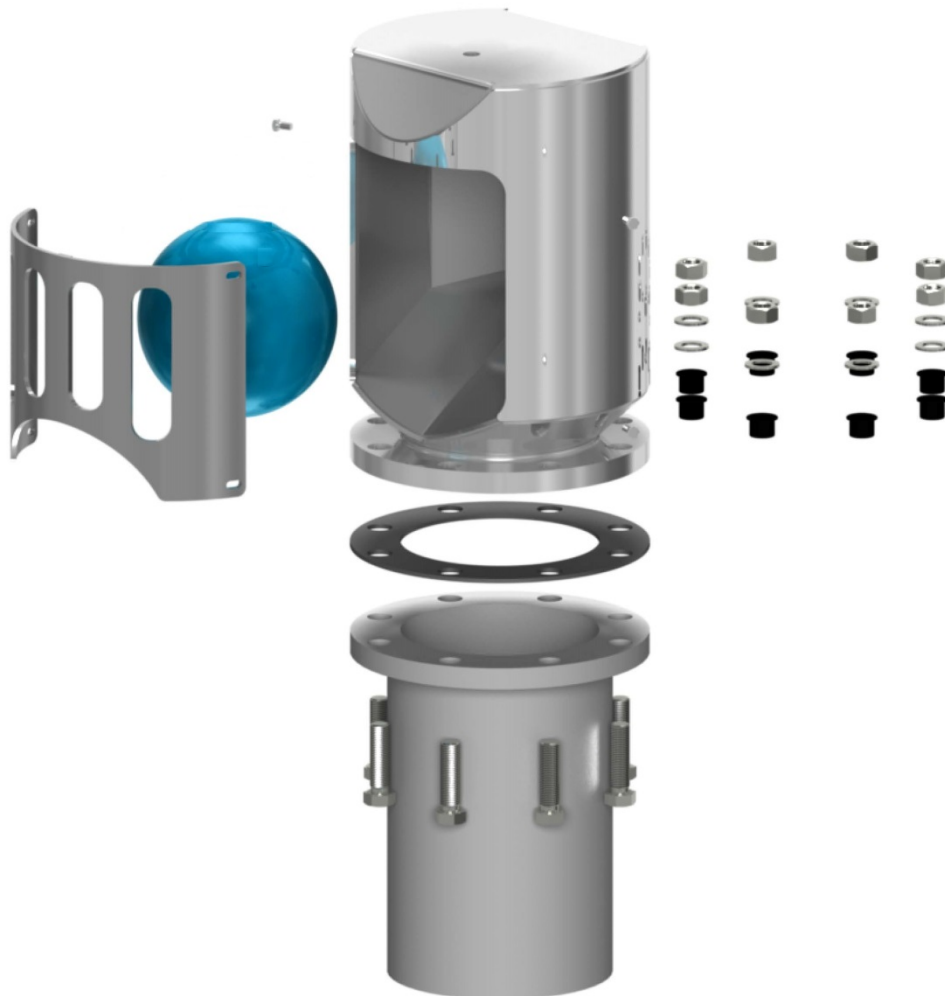


- The valves have to be fitted properly on the flanges using fitting bolts in all boltholes.
- Make sure a proper gasket is fitted between the two flanges. (Yard supply)
- The valves have to be fitted in such a way that the in-/outlet is not blocked or hindered to allow free flow.
- Always install the valves in accordance to the class society regulations.
- Make sure the bushings are placed in the boltholes before bolting the valves.
- Warranty is void when the valves are placed without the supplied bushes.



If the valves need to be painted, make sure any screen is covered or removed before painting. Paint on the *screen can block, but will most certainly reduce, the capacity of the valve and its flame-retarding function. Uncover and clean the screen before replacing it* after painting.

Rev: A	Written: RK	Installation procedure
Date: 2016-03-29	Page: 5 / 7	Approved by: RK



1. Do not paint flame screen (if fitted)
2. Check classification rules if a screen is needed when air pipe head is fitted on a ballast tank. If not, remove flame screen when air pipe head is fitted on ballast tanks.
3. Use galvanised or stainless steel bolts and nuts (Yard supply)
4. **Use isolation sleeves** (supplied by Winel)
5. Use full size gasket (Yard supply)
6. Use flat face counter flanges (Yard supply)

Rev: A	Written: RK	Installation procedure
Date: 2016-03-29	Page: 6 / 7	Approved by: RK



Installation procedure
Tank Vent Check Valves
CM Type

WINE L B.V.
P.O. Box 70, 9400 AB Assen,
Dr AF Philipsweg 55, 9403 AD Assen,
The Netherlands
Tel. 31 (0)592 366060, Fax 31 (0)592 340833
E-mail: info@winel.nl
<http://www.winel.nl>

HOW TO CONTACT WINE L B.V. (AFTER-) SALES DEPARTMENT

You can contact us by:

Phone : +31-(0)592-366060

Fax : +31-(0)592-340833

E-mail : sales@winel.nl

Visit our web site : <http://www.winel.nl>

Rev: A	Written: RK	Installation procedure
Date: 2016-03-29	Page: 7 / 7	Approved by: RK