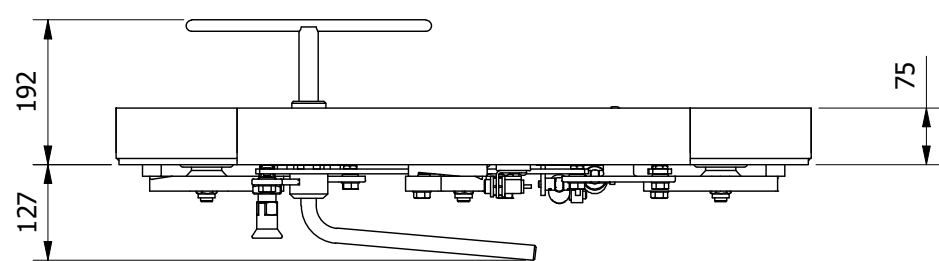
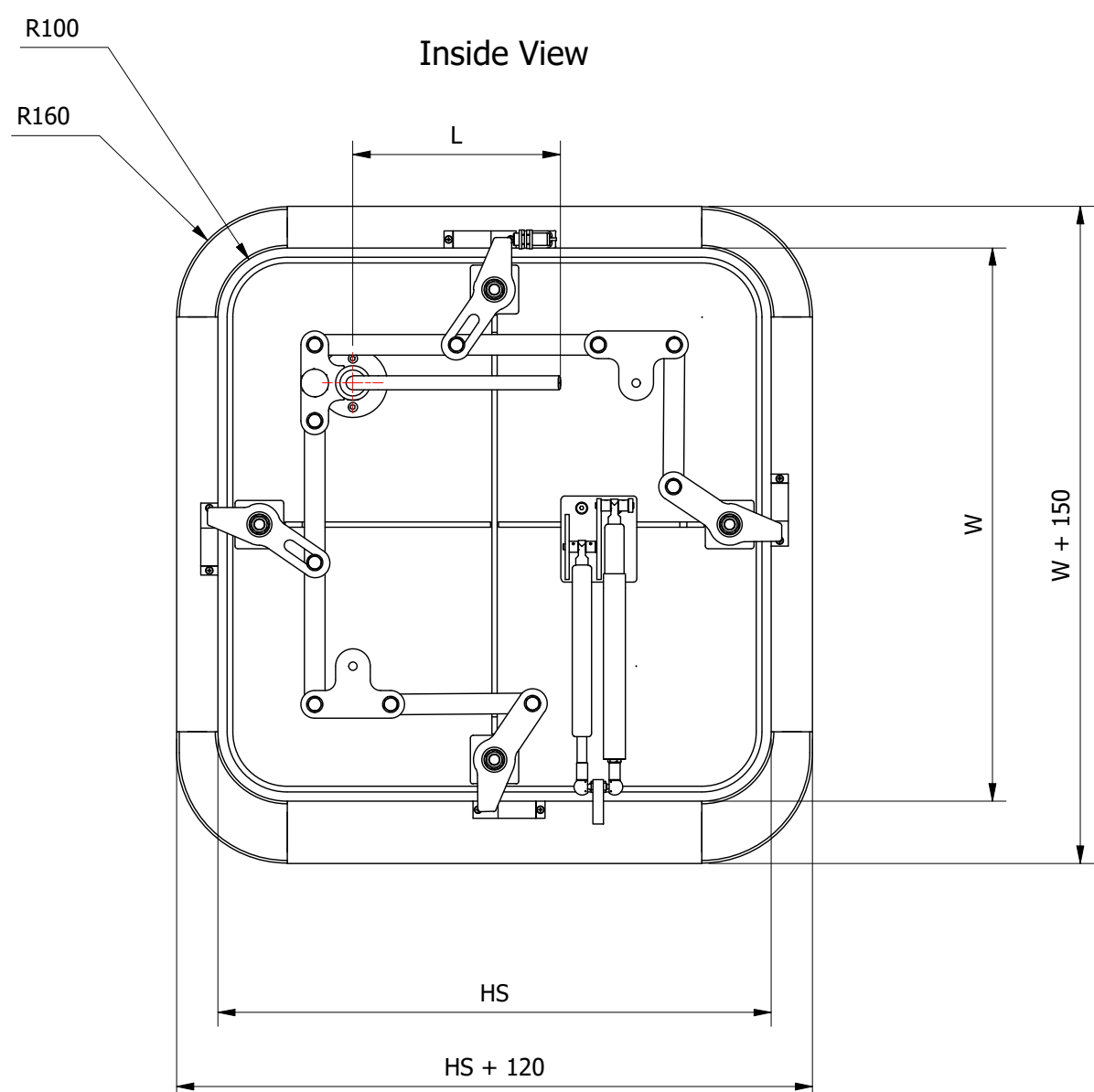
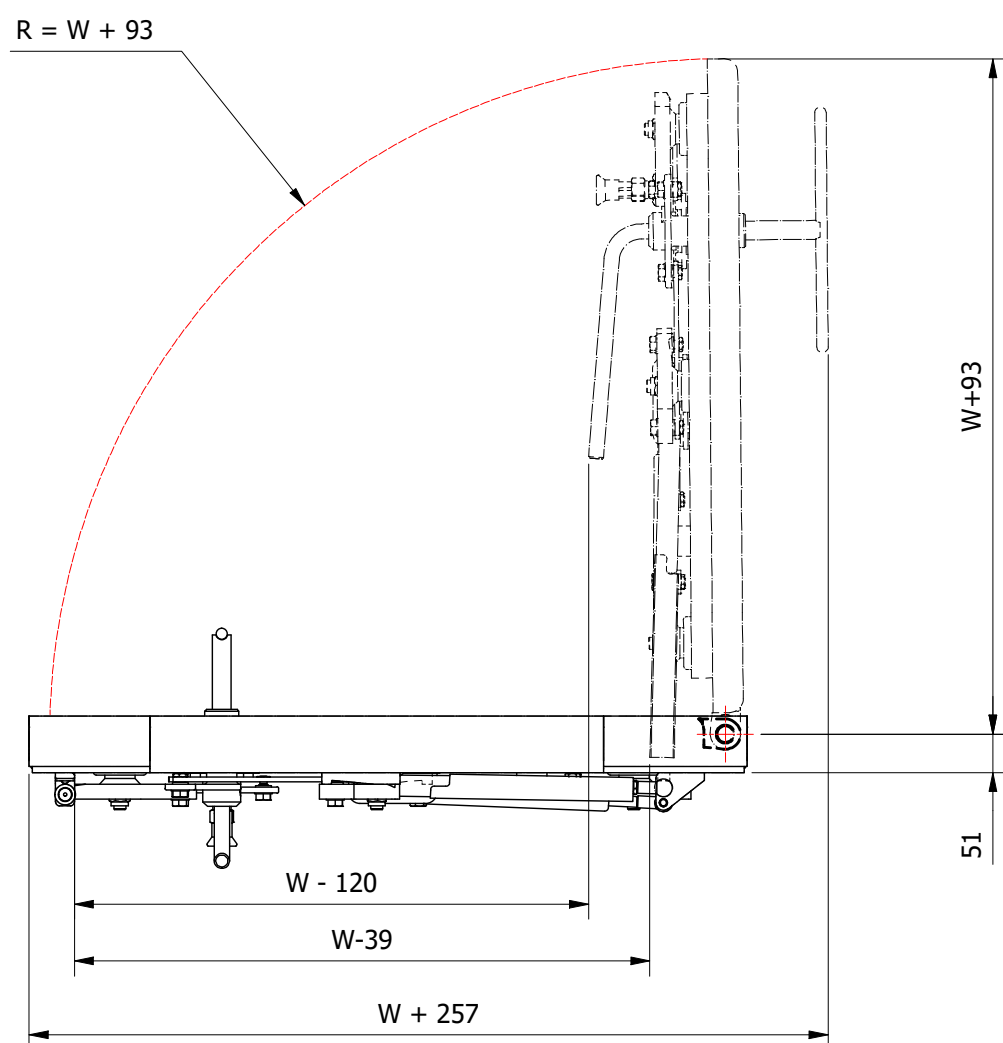


Outside View



Front View



Inside View

- Hatch cover: Grade A / Aluminium / Stainless Steel ; 8 mm
- Coaming: U-Frame Steel / Aluminium / Stainless Steel ; 8 mm
- Cleats: Cast stainless steel: 1.4408 / ATSM CF8M equivalent to 1.4404 / AISI 316
- Mechanism: Stainless Steel 1.4404 / AISI 316L
- Seal: Seal 42.5x20.4 EPDM 30 shore
- Wedge: Brass
- Hinge: Stainless Steel or Aluminium with Orkot® bearing and Stainless Steel Axle

Insulation : Rockwool Marineslab 55 or FireMaster Marine Plus Blanket :40mm / 70 kg m³

Clear Opening: HS x W (min. 650x650 / max. 850x850)

Cut in plate: HS + 122 x W + 152 R=161

Outside dimensions: HS + 120 x W + 150

Handle length: L =300/360 mm

Pressure: 0-5 mWc

Drain: 2 pieces 1" ***Optional***

Gasspring: Steel standard

Stainless Steel ***Optional***

ESI openholder ***Optional***

Locking pin: Inside ***Optional***

Polishing: T-Key ***Optional***

Cleat system ***Optional***

Hinge pin & rose ***Optional***

Revision	Description	RM	29-6-2021	-
Name	Date	Rev		
Status: WorkInProgress				
Engineer: RM		21-5-2017		
American projection:	Description: WT Musketeer Hatch Flush U frame St gassprings			
Reference: Winel product catalog				
Drawing number: 9541.26 XXX		Rev.	Sheet	Size
		-	1 / 1	A2
<p>Dr. A.F. Philipsweg 55 9403 AD Assen The Netherlands</p> <p>info@winel.nl www.winel.nl +31 (0)592 366 060</p>				
The drawing and design shown is our property and may not be used or disclosed for any third person without our specific written approval.				